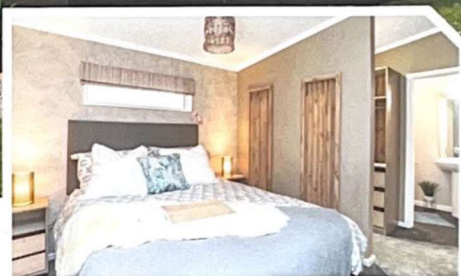




# HARRINGTON HOLIDAY LODGE



The Harrington is a modern, Nordic-style home with an open-plan layout combining clean and light spaces with large windows to the lounge and dining area. The elegant Scandinavian design offers an inherent cosiness with its calming grey, taupe and linen colour scheme. The Harrington is available in two- and three-bedroom options with en-suite bathroom and walk-in wardrobe to the master bedroom. We offer an alternative layout with a separate kitchen for those who prefer a dedicated dining space - the choice is yours.



**TINGDENE**  
Discover the difference

**T/50**  
Since 1969

Park Homes + Holiday Lodges  
[tingdene.co.uk](http://tingdene.co.uk) | 01933 230 130

CONTINUED ON THE REVERSE

Images are artistic impression - actual exterior and interior lodge design may vary.



## KEY FEATURES INCLUDE

- Built to BS 3632 standard.
- 10-year Platinum Seal structural warranty.
- 7-year boiler warranty.
- Inset spotlight to porch and four inset spotlights roof overhang to lounge.
- Hallway has a feature wall with shelving separating hall and lounge.
- Three-seater sofa, two cinema flex chairs and coffee table in the lounge.
- Feature entertainment area with inset spotlights.
- Open plan layout.
- Extendable dining table with 4 chairs.
- Breakfast bar with four grey bar stools.
- Built-in wine rack and integrated 70/30 fridge/ freezer.
- Feature slatted wall separating master bedroom from walk-in wardrobe.
- King size divan bed with mattress and headboard.
- Second bedroom has built-in wardrobe with feature corner shelving.



## HARRINGTON FLOOR PLAN - 12.192 x 6.096m (40' x 20')

LOUNGE 4.62 x 2.89m  
 KITCHEN 2.82 x 2.89m  
 DINER 3.27 x 2.89m

BATHROOM 2.00 x 1.70m  
 HALL 3.21 x 1.10m  
 BEDROOM 1 2.93 x 2.76m

EN-SUITE 1.21 x 2.76m  
 BEDROOM 2 3.20 x 2.81m